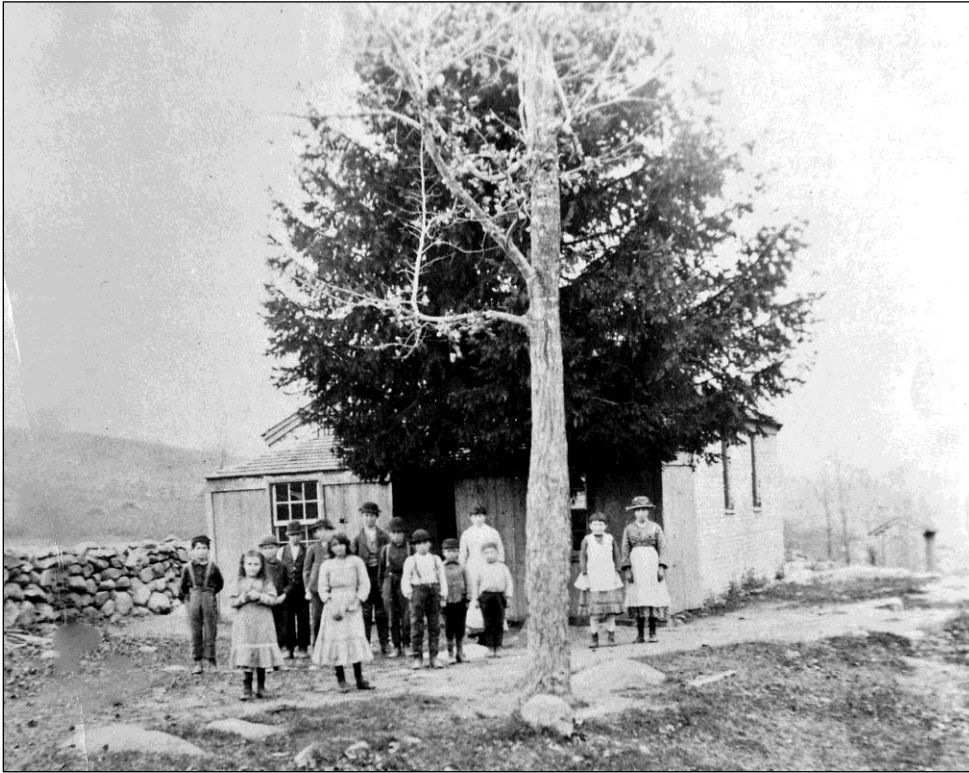


## Upper Campbell Mountain School #11 and Lower Campbell Mountain School #19



**Upper Campbell Mountain School No. 11, circa 1860's**

This building was located on the road connecting Morton Hill Road with the North and West Campbell Mountain Roads. The foundation can still be seen but the building has collapsed.



**Upper Campbell Mountain School, 1988**



**Lower Campbell Mountain School No. 19, winter 1910**



**Lower Campbell Mountain schoolhouse today--Foote residence.**

Many Delaware County one-room schools were named for the mountains or streams where they were located. If more than one school was located on the same mountain or branch of a brook, one would be called the upper and the other lower. Such was the case with the Campbell Mountain schools. The Upper Campbell Mountain School District No. 11 was built in 1846 and the Lower Campbell Mountain School District No 19 was built in 1854. District No. 11 was closed before the Colchester centralization and District 19 was closed as part of the 1938 schools consolidation. These schools served the farm families on Campbell Mountain, but in the late 1800's the expanding lumber and acid factory industries brought additional families to the area and added to the school population. The Upper Campbell Mountain school house photograph shows that the mountain has been totally clear cut.