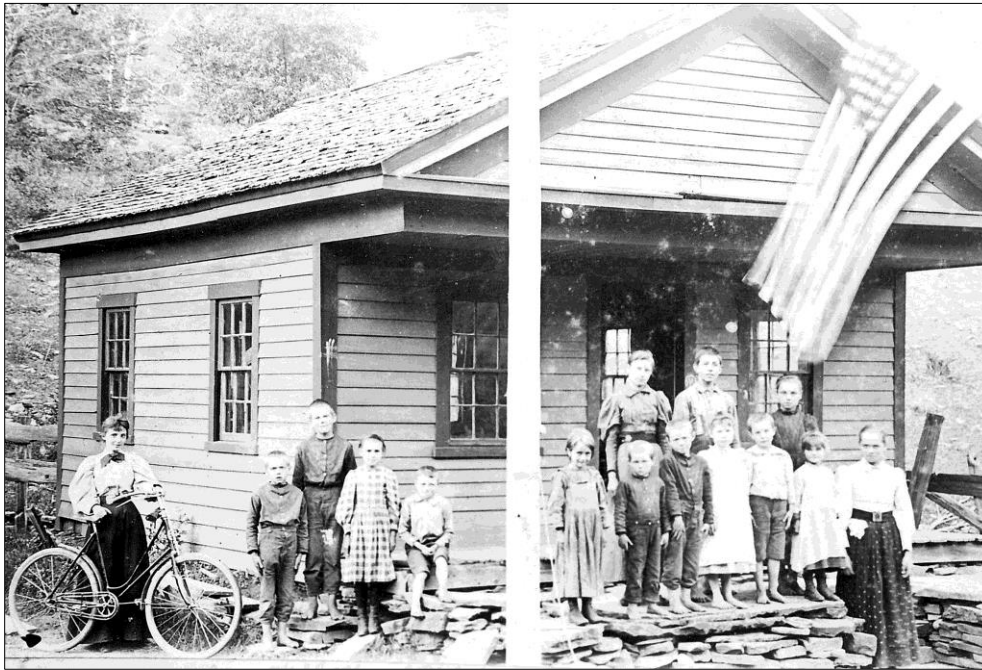


Long Flats School Joint Colchester/Hancock No. 2 and Harvard- Hancock No. 3



Long Flats School circa 1895

Long Flats School was built in the mid 1800's and was located on the present State Route 30, half way between Harvard and the Hancock/Colchester town line. Measuring 16 by 20 feet (including the porches), it was one of the smallest one room school houses in Delaware County.

Harvard's one room school house was built in 1855 and is located on the corner of Route 30 and Houck Mountain Road, across the road from the former Harvard United Methodist Church.

Both of these schools were incorporated into the Colchester Township School Consolidation of Common Schools in 1938, with their students going to the new Central School in Downsview.



Harvard School House 2015



Harvard School –Hancock District No. 3, 1903, Lula B. Palmer teacher